



CROWNWeb

BATCH Record(s) with No SSN and No HICNUM

Standard Operating Procedures

July 2, 2009

This CROWNWeb *BATCH Record(s) with No SSN and No HICNUM* was developed by FMQAI, the Florida ESRD Network, with funding from the Centers for Medicare and Medicaid Services (CMS) under contract # HHSM-500-2006-NW007C_Modification No. 000024, provided for the ESRD Renal - Requirements, Communication and Training (RCT) Special Project.

BATCH Record(s) with No SSN and No HICNUM

2 DOCUMENT CONTROL.....3

3 INTRODUCTION.....4

4 ASSUMPTIONS5

5 PAPER LA YOUT6

6 USE OF SUBJECT MATTER EXPERTS7

7 GENERATE CROWN HELP DESK SERVICE REQUEST PROCEDURES8

8 COMMUNICATION PROCEDURES9

9 PROCEDURES11

10 FLOWCHARTS.....12

11 DEFINITIONS AND ACRONYMS.....13

2 DOCUMENT CONTROL

Document Information

Information	
Document Owner	FMQAI
Document Type Code	SOP
Sequence Number	001
Document Type	SOP
Release Number	1
Release Date	

Document History

Version	Issue Date	Changes
1	July 2, 2009	Initial Document
2	July 24, 2009	Update Assumptions, Process BATCH, flowcharts
3	August 27, 2009	
4	November 9, 2009	Updates from help desk
5	November 10, 2011	Updates to QIMS Reference

Document Approvals

Role	Name	Signature	Date

References:

3 INTRODUCTION

PURPOSE

The purpose of this document is to define how to manage those patient records processed through CROWNWeb with no Social Security Number (SSN) and no Patient Medicare Claim Number (also known as Health Insurance Claim Number [HICNUM]). This document will also define a high-level business process to be followed.

4 ASSUMPTIONS

- BATCH submission is a process to submit data for ESRD patients from the Facility into the CROWNWeb System. Data to be submitted includes: patient demographic data and patient clinical data
- Error 100 is defined as a patient not having SSN and HICNUM during BATCH submission. However, it is not limited to BATCH process. If the same patient (with no SSN and no HICNUM) is admitted to non-batch Facility and a "near match" occurs, then ESRD Networks will have to go through collection process as described in the third bullet below, although no patient mapping creation will be required in this case.
- When the ESRD Network is admitting an existing CROWNWeb ESRD patient with no SSN and no HICNUM they will only be required to enter the minimum amount of data for the Facility. The minimum data is:
 - The six patient matching attributes: SSN, HICNUM, patient's First Name, patient's Last Name, patient's Date of Birth, and patient's Gender. (Note: SSN/HICNUM may be blank or SSN may be a dummy value)
 - The Admission information (minimum of four elements - if the patient is non-transient).
 - The Treatment information (five elements for a hemodialysis patient, three elements for a non-hemodialysis patient)
 - The minimum Patient attributes (two elements (Physical State and Mailing State)).
- This paper starts the process when a patient that currently exists in CROWNWeb arrives at a new facility for treatment.
- This paper does not define business processes specific to an individual Facility, ESRD Network, CMS, and/or CMS's Contractor.
- These are high level business processes that indicate responsibility for actions; they do not include every necessary action at the detail level.

5 PAPER LAYOUT

This paper will define the highest level of patient record processing when there is no SSN and no HICNUM and describe how Facilities will collaborate with others to complete the entry of the patient into CROWNWeb.

There will be written text defining any generic processes along with flowchart to describe the flow.

6 USE OF SUBJECT MATTER EXPERTS

FMQAI has consulted with subject matter experts (SMEs) to gather information and define a process to allow consistency nationwide. These SMEs consist of employees of ESRD Networks, Facilities, CMS, and CMS's contractors. FMQAI will continue to use these sources to obtain the specific information needed.

7 GENERATE CROWN HELP DESK SERVICE REQUEST PROCEDURES

Generate CROWN Help Desk Service Request Procedures

1. The Stakeholder contacts CROWN Help Desk by e-mail, by web form, or by phone: esrdhd1@esrd.net, 1.888.ESRD.HD1, or through the CROWN Help Desk Portal <https://mrx-cw-eservice.gcrm.com/crown/welcome.aspx>
2. The Stakeholder explains issues/discrepancies to the CROWN Help Desk for issue documentation.
3. The CROWN Help Desk generates a service request and if unable to resolve, assigns to the appropriate party.
4. The CROWN Help Desk tracks and provides summary reports on outcomes for all service requests to CMS.

8 COMMUNICATION PROCEDURES

These communication procedures will outline generic steps to be taken when questions need to be answered outside one specific entity. The underlying premise of these communications is; the Facilities are responsible for their data. These procedures will include, but is not limited to ESRD Networks, Facilities, CROWN Help Desk, CMS and CMS's Contractors.

A BATCH Submitting Organization (BSO) is the organization that has been delegated the authority to submit data on behalf of a Facility. Communications procedures between the BSO and a Facility are internal processes for each Facility to define as part of its agreement with another entity to delegate authority.

This list is not meant to be a comprehensive list of all scenarios. The intent is to give guidelines that all entities can follow.

- A. It is appropriate for a Facility to contact another Facility (Exception: If prior Facility is within the same BSO entity, follow internal procedures; if a Facility has question for the prior Facility and is unable to contact them, contact the ESRD Network):
 - When a patient has previously received care at another Facility and the receiving Facility has questions about data submitted by (or on behalf of) or missing data from the previous Facility.
 - When a Facility gets a warning of a possible near match and wants to verify the six identifiers to admit the patient in CROWNWeb.
 - When a Facility has deleted an erroneous addition event and needs to advise the prior Facility to delete the erroneous System Discharge that occurred in CROWNWeb (NOTE: Main example of this would be a Facility accidentally transferring a patient in with the wrong status (i.e. permanent rather than transient) causing a System Discharge for the prior Facility. They should call the prior Facility advising them that the incident occurred so the prior Facility is aware that there is an erroneous discharge that needs to be removed).
- B. It is appropriate for a Facility to contact and ESRD Network:
 - For near match issues not related to transferring patient or that cannot be resolved through verification with the transferring Facility.
 - For discrepancies and/or questions between two Facilities about the correct way to report admit/discharge dates in CROWNWeb.
 - To correct or update Facility information for fields that they do not have permission to access.
 - When a Facility has questions about previously entered or missing data from another Facility and they are unable to contact the previous Facility.
- C. A Facility should open a service request through the CROWN Help Desk:
 - When there is a security log-in issue.
 - To report a CROWNWeb System bug or error message.
 - To report a CROWNWeb System enhancement request.
 - To receive answers to questions related to application usability.
 - When their CROWNWeb account has been inactive greater than 60 days and they need access.
 - When there are CROWNWeb data entry error/issues that cannot be resolved within their Corporation and their corresponding ESRD Network.
 - When a Facility has questions about previously entered or missing data from another Facility where the Facility is not within their Corporation and could not be resolved by the ESRD Network.
 - When the CROWNWeb System is down.
 - When an acute patient or an erroneously - entered patient should be removed.
- D. An ESRD Network should contact a Facility:

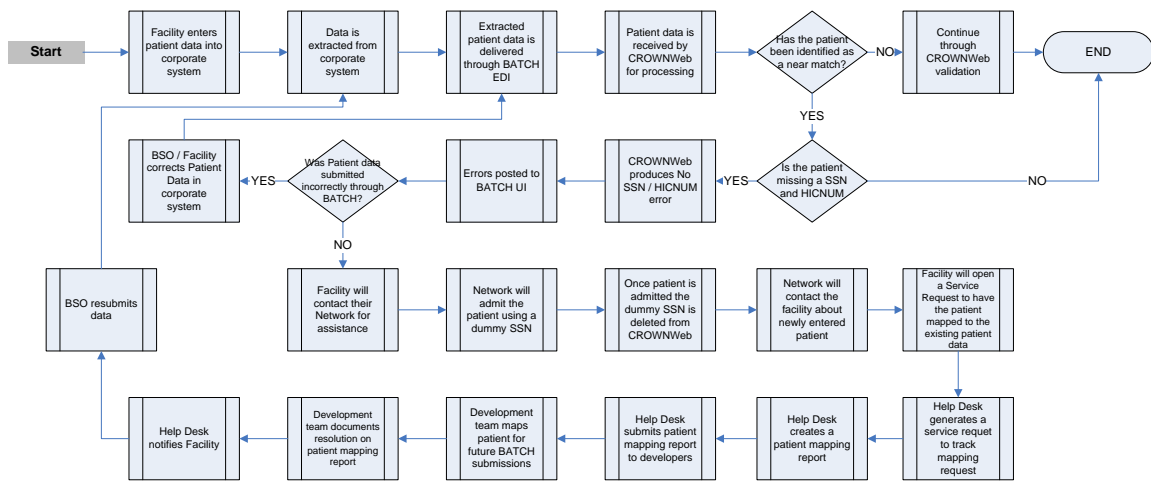
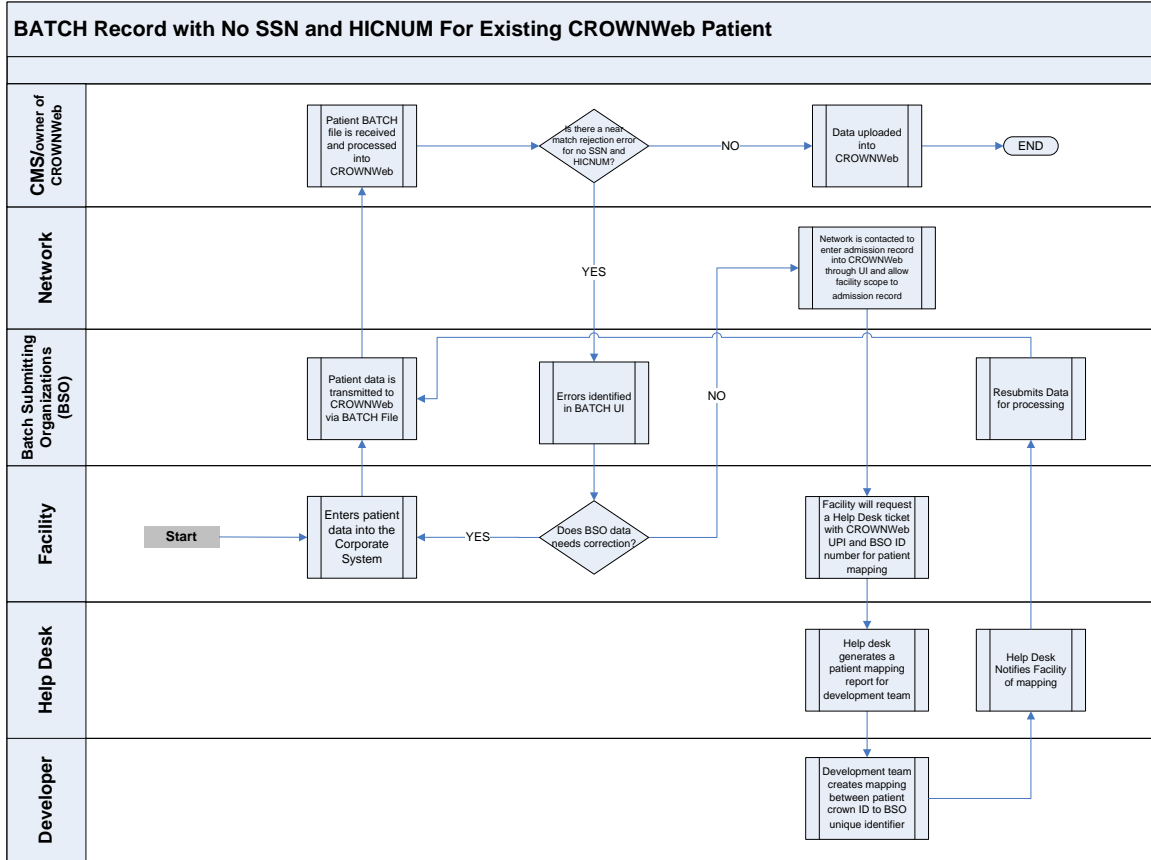
- When there are any CROWNWeb related discrepancies.
 - For follow-up on unresolved issues such as GAP patient or change requests not completed in a timely manner.
 - For follow-up on Facility pending Certification using the current standard operating procedures in place.
 - When there are noted problems with accuracy or timeliness of data entry.
 - When there are noted problems with clinical data entry (incorrect, missing, and late).
- E. An ESRD Network should contact another ESRD Network:
- When a patient transfers from one ESRD Network to another ESRD Network and the ESRD Network encounters a problem with the patient that requires intervention from the previous ESRD Network.
- F. An ESRD Network should contact CMS:
- When a submitted CMS OMB form needs to be deleted.
 - When a Facility needs to be removed from a report such as Vascular Access Reporting (as defined in the Vascular Access Report SOP).
- G. An ESRD Network should open a service request through the CROWN Help Desk:
- When there is a security log-in issue or a security breach.
 - To report a CROWNWeb System enhancement request.
 - To receive answers to questions related to application usability.
 - When there are data entry errors/issues that cannot be resolved through the SUI.
 - To report a CROWNWeb bug or error message.
 - When there are system discrepancies and all other communication efforts have been exhausted.
 - When CROWNWeb System is down.
 - When duplicate patients need to be merged.

9 PROCEDURES

BATCH record(s) with no SSN and no HICNUM Procedures

- A. The Facility enters patient data into their Source System.
 - An extract of patient data is taken from the Source System (this extract will contain multiple Facilities).
 - Extracted patient data is delivered through BATCH Electronic Data Interface (EDI) for processing in CROWNWeb.
- B. The patient data is received by CROWNWeb for processing.
 - CROWNWeb starts processing the received BATCH file for errors.
 - If through processing of the BATCH file the patient is identified as a near match due to not having a SSN and HICNUM.
 - The patient is not processed and a near match error code will be included in the feedback file, and the Facility can download the feedback file from CROWNWeb.
 - NOTE: All or almost all no HICNUM and no SSN patients will be identified as near match patients, since HICNUM and SSN are two of the strongest match characteristics in CMS CROWNWeb System. Any patients with no SSN and no HICNUM that was not found to be a near match will be considered a new patient to CROWNWeb.
- C. If a near match is identified due to no SSN and no HICNUM, the CROWNWeb record or the Source System needs to be changed.
 - If the Source System needs to be changed
 - The Facility will update their Source System with the correct patient data.
 - The Facility will resubmit the corrected record through BATCH.
 - If the CROWNWeb record needs to be changed, the Facility will contact their corresponding ESRD Network for assistance.
 - The ESRD Network will admit the patient into the correct Facility using a dummy SSN.
 - The dummy SSN will be a single unique number for each ESRD Network and can be used repeatedly.
 - Once the patient is admitted into the correct Facility, the ESRD Network will immediately delete the dummy SSN from the newly entered patient.
 - The ESRD Network will contact requesting Facility to inform them the patient has been added to their Facility.
 - The Facility will request a service request through the CROWN Help Desk to have patient mapped. The Facility should know the following information prior to calling: Organization Patient ID, CROWN Patient ID, Organization Affiliation, Organization Facility ID, CCN, and Business Name.
 - The CROWN Help Desk will create and process a service request for the request.
 - The CROWNWeb Development Contractors receives the service request and creates the patient mapping.
 - After the mapping is completed, the CROWNWeb Development Contractors will enter the mapping information in the service request resolution and close the service request. This will create a CROWNWeb System generated e-mail notifying the originator of resolution.

10 FLOWCHARTS



11 DEFINITIONS AND ACRONYMS

#	PUID	Word	Definition
11.1	14	BATCH	Electronic data submission.
11.2	15	BSO	BATCH Submitting Organization (BSO)
11.3	18	CCN	CMS Certification Number (CCN) also known as Provider Number.
11.4	19	CROWN Facility Unique Identifier	A system-generated unique characters used in CROWNWeb System to identify a specific Facility.
11.5	1	CROWNWeb	Consolidated Renal Operations in a Web Enabled Network.
11.6	6	Data Integrity Issue(s)	Issue(s) relating to the viability of the system or the integrity of the data is endangered by a situation requiring immediate investigation or a facility is unable to use CROWNWeb, and it appears that the problem can only be resolved by CROWNWeb Development Contractor's action (that is, it's not a password problem, a user-registration problem, and internet connectivity problem, or a problem with the user's own computer).
11.7	16	Data Mapping	Compiled data element programmed to connect between two distinct entities.
11.8	17	Delegation of Authority Form	CMS-10268 Form verifying that the ESRD Facility delegated their corporate entity to submit data to CMS on their behalf.
11.9	2	Dialysis Facility	A unit (hospital-based or free-standing), which is approved to furnish dialysis services directly to ESRD patients.
11.10	3	End Stage Renal Disease (ESRD)	The stage of renal impairment that appears irreversible and permanent, and requires a regular course of dialysis or kidney transplantation to maintain life.
11.11	4	ESRD Network Organization	Coordinator of Medicare-related ESRD activities for a Medicare approved ESRD facilities in a designated geographic area. Also referred to as "ESRD Network."
11.12	5	Incident Report	A form containing details of incidents involving any component of an IT Infrastructure or any aspect of the IT service.
11.13	7	ISG	Information System Group (ISG) at the Centers for Medicare and Medicaid Services (CMS)
11.14	10	OrgFacilityCode	Organization Facility Code. This is the ESRD Facility's corporate organization number.
11.15	20	QIMS	The QualityNet Identity Provisioning System (QIMS) allows CMS, ESRD Network and Facility Security Administrator (SA) the abilities to register new staff members for CROWNWeb, ensure security for

#	PUID	Word	Definition
			CROWNWeb users, minimize the risk of security incidents, and assist in the secure management of patient information.
11.16	21	QIMS Account Form	A CMS approved form to request for ESRD dialysis facility users access to CROWNWeb System.
11.17	11	Scope	“Scope” refers to CROWNWeb data that a particular user is allowed to access (typically because it is necessary to complete activities required by the Medicare program). Example: If you work in Facility A, ordinarily data pertaining to a particular patient’s time of treatment at Facility A is “in scope” for you. Patient data relating to times before or after the patient was in your facility’s care are usually “out of scope” for you. Scope controls the access of facility(s) where user can perform their role (tasks they can do).
11.18	22	Security Administrator	Security Administrator (SA) assists in registering new staff members for CROWNWeb System. They help ensure security for CROWNWeb users.
11.19	9	Service Request	A Service Request is a mechanism used to track the detection, reporting, and potential resolution of identified problem. Service Request and/or any industry standard terminology.
11.20	8	SME	A Subject Matter Expert (SME) is a person who is an expert in a particular area.
11.21	12	SOP	Standard Operating Procedures (SOP) are written procedures prescribed for repetitive use as a practice, in accordance with agreed upon specifications aimed at obtaining a desired outcome.
11.22	23	Source System	A database, application, file, or other storage facility from which the data in a data warehouse is derived.
11.23	13	XSD Error	Error generated from XML validation prior to being submitted into CROWNWeb for processing during BATCH submission.